



 **KNIT | SKILL LEVEL: INTERMEDIATE**

ABBREVIATIONS

Alt = Alternate(ing)

Approx = Approximately

Beg = Begin(ning)

Cont = Continue(ity)

C6F = Slip next 3 stitches onto cable needle and leave at front of work. K3, then K3 from cable needle.

C6B = Slip next 3 stitches onto cable needle and leave at back of work. K3, then K3 from cable needle

Cont = Continue(ity)

Dec = Decrease(ing)

Inc = Increase(ing)

K = Knit

K2tog = Knit next 2 stitches together

Kfb = Increase 1 stitch by knitting into front and back of stitch

P = Purl

Pat = Pattern

PM = Place marker

Rem = Remain(ing)

Rep = Repeat

Rnd(s) = Round(s)

RS = Right side

Ssk = Slip next 2 stitches knitwise one at a time. Pass them back onto left-hand needle, then knit through back loops together

St(s) = Stitch(es)

T6F = Slip next 3 stitches onto cable needle and leave at front of work. P3, then K3 from cable needle.

T6B = Slip next 3 stitches onto cable needle and leave at back of work. K3, then P3 from cable needle.

WS = Wrong side

MATERIALS

Bernat® Blanket Pet™ (8 oz/225 g; 269 yds/246 m)

Sizes	S	M	L	XL	
Main Color (MC) Dk Gray (34020)	1	1	1	1	ball
Contrast A Red (34018)	1	1	1	1	ball

Size U.S. 10 (6 mm) knitting needles. Size U.S. 10 (6 mm) circular knitting needle 16" [40 cm] long. Set of four size U.S. 10 (6 mm) double-pointed knitting needles **or size needed to obtain gauge.** Cable needle. Stitch markers. Stitch holder.

SIZES

To fit dog chest measurement:

S 10" [25.5 cm]

M 14" [35.5 cm]

L 17" [43 cm]

XL 20" [51 cm]

Finished chest:

S 12" [30.5 cm]

M 16" [40.5 cm]

L 19" [48 cm]

XL 22" [56 cm]

GAUGE: 11 sts and 16 rows = 4" [10 cm] in stocking st.

INSTRUCTIONS

The instructions are written for smallest size. If changes are necessary for larger sizes the instructions will be written thus (). When only one number is given, it applies to all sizes. For ease in working, circle all numbers pertaining to your size.

Cable Panel (worked over 16 sts). See chart on page 3.

1st row: (RS). P2. T6B. T6F. P2.

2nd and alt rows: Knit all knit sts and purl all purl sts as they appear.

3rd row: P2. K3. P6. K3. P2.

5th row: P2. C6F. C6B. P2.

7th row: P2. K12. P2.

9th row: P2. T6F. T6B. P2.

11th, 13th, 15th and 17th rows: P5. K6. P5.

19th row: P2. C6B. C6F. P2.

21st row: P2. K12. P2.

22nd row: As 2nd row.

These 22 rows form Cable Panel.

Beg at neck edge, with pair of needles and A, cast on **25 (33-41-49)** sts loosely.

1st row: (RS). K1. *P1. K1. Rep from * to end of row.

2nd row: P1. *K1. P1. Rep from * to end of row.

Rep last 2 rows of (K1. P1) ribbing **2 (3-4-5)** times, inc 3 sts evenly across last row. **28 (36-44-52)** sts. Break A. Join MC.

Proceed in pat as follows:

1st row: With MC, (K1. P1) **3 (5-7-9)** times. Work 1st row of Cable Panel. (P1. K1) **3 (5-7-9)** times.

2nd row: (P1. K1) **3 (5-7-9)** times. Work 2nd row of Cable Panel. (K1. P1) **3 (5-7-9)** times.

3rd row: (P1. K1) **3 (5-7-9)** times. Work 3rd row of Cable Panel. (K1. P1) **3 (5-7-9)** times.

4th row: (K1. P1) **3 (5-7-9)** times. Work 4th row of Cable Panel. (P1. K1) **3 (5-7-9)** times.

Last 4 rows form Moss St Pat. Cable Panel is now in position.

Keeping cont of Cable Panel and Moss St Pat, proceed as follows:

Shape chest: 1st row: (RS). Kfb. Pat to last 2 sts. Kfb. K1.

2nd and alt rows: Knit all knit sts and purl all purl sts as they appear. Rep last 2 rows **4 (5-5-6)** times more, taking inc sts into Moss St Pat. **38 (48-56-66)** sts.

Work 2 (4-6-12) rows even in pat.

Leg Openings: 1st row: Pat across **3 (5-7-8)** sts. Cast off **5 (6-8-9)** sts **loosely**. Pat across **22 (26-26-32)** sts (including st on needle after cast off). Cast off **5 (6-8-9)** sts **loosely**. Pat across last **3 (5-7-8)** sts.

Working each section with separate balls of yarn, cont even in pat until Leg Openings from cast off sts measure **1 (1½-1½-2½)" [2.5 (2.5-4-6) cm]**, ending on a WS row.

Joining row: Pat across **3 (5-7-8)** sts. **Turn.** Cast on **5 (6-8-9)** sts. **Turn.** Pat across **22 (26-26-32)** sts. **Turn.** Cast on **5 (6-8-9)** sts. Pat to end of row. **38 (48-56-66)** sts.

Cont even in pat until work from last row of ribbing measures **6 (7½-9-14)" [15 (19-23-35.5) cm]**, ending on a WS row. PM at each end of last row.

Back shaping: Keeping cont of pat, cast off **4 (6-8-9)** sts beg next 2 rows. **30 (36-40-48)** sts.

Next row: (RS). K2. ssk. Pat to last 4 sts. K2tog. K2.

Next row: P2. Pat to last 2 sts. P2. Rep last 2 rows **4 (6-7-8)** times more. Leave rem **20 (22-24-30)** sts on a spare needle.

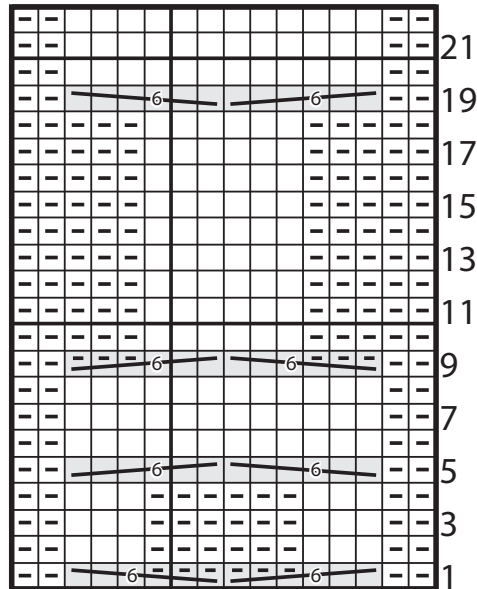
FINISHING

Pin garment piece to measurements. Cover with damp cloth, leaving cloth to dry.

Body ribbing: With RS facing, circular needle and A, pick up and knit **12 (16-22-25)** sts along Body from marker to Back. **K20 (22-24-30)** from st holder, dec 3 sts evenly across. Pick up and knit **12 (16-22-25)** sts along opposite side of Body to marker. **41 (51-65-77)** sts. **Do not join.** Working back and forth across needle, work 6 rows of (K1. P1) ribbing as given for Collar.

Leg ribbing: With RS facing, double-pointed needles and A, pick up and knit **6 (8-9-13)** sts on first 2 needles and **6 (8-10-12)** sts on third needle. **18 (24-28-38)** sts. Join in rnd and work 6 rnds in (K1. P1) ribbing. Cast off in ribbing loosely. Sew neck, chest and side of Body ribbing seam.

Cable Panel



Start Here

Key

☐ = Knit on RS rows. Purl on WS rows.

◻ = Purl on RS rows. Knit on WS rows.

 = C6B

 = C6F

 = T6B

 = T6F

